



*Lab. of Integrated Circuits and Systems, Tsinghua University*

---

# **A Multi-Mode Reconfigurable Analog Baseband with I/Q Calibration for GNSS Receivers**

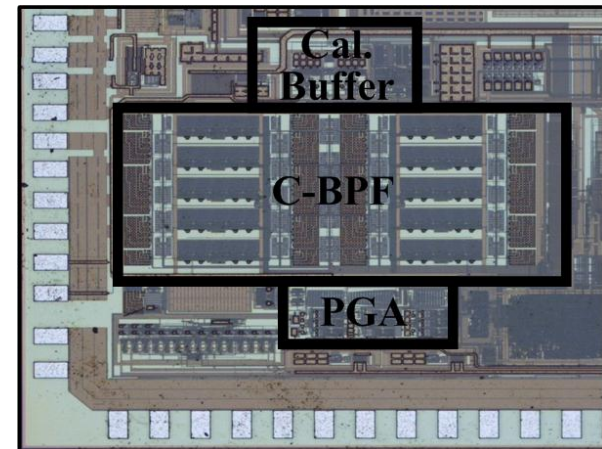
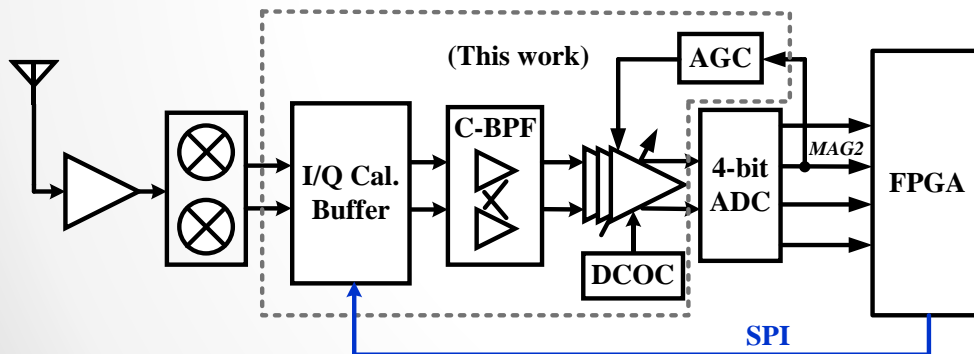
**Zheng Song,**

**Nan Qi, Baoyong Chi, and Zhihua Wang**

2014/1/8

# Architecture

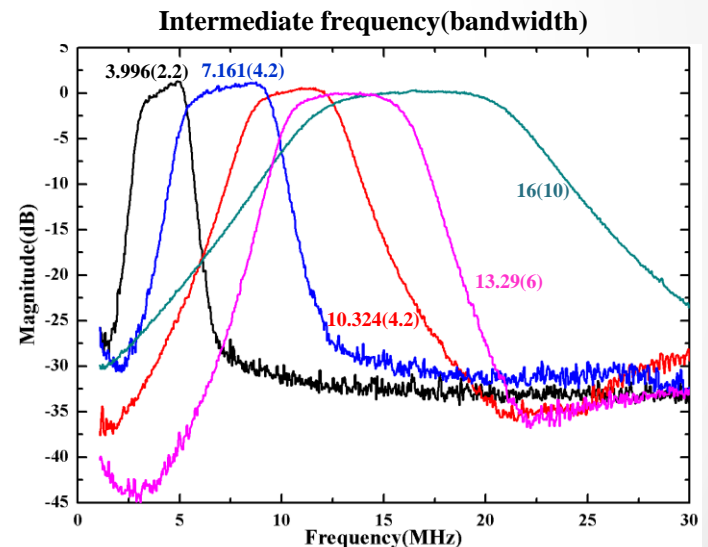
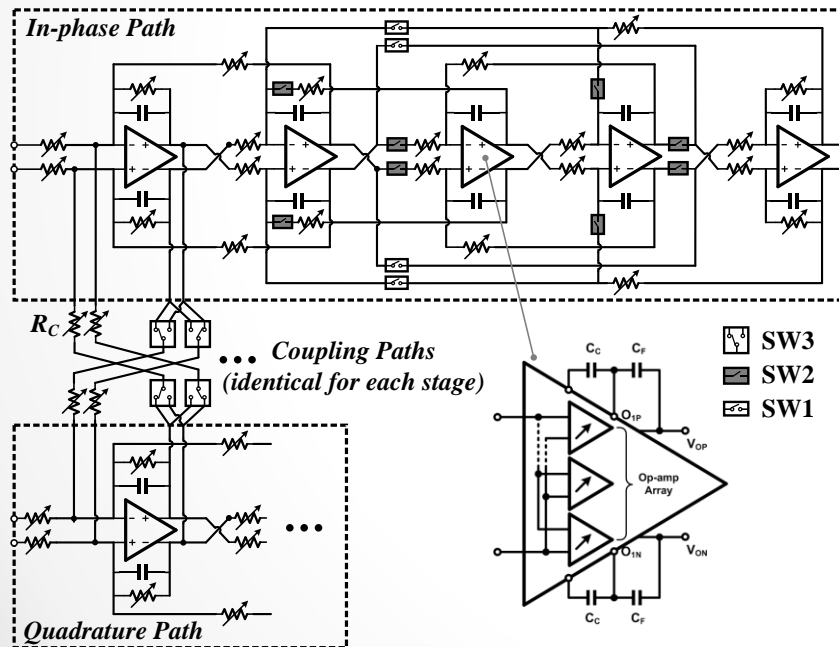
- Complex band-pass filter (C-BPF)
- PGA and AGC Loop
- I/Q calibration



# Complex band-pass filter

## • Reconfigurable C-BPF

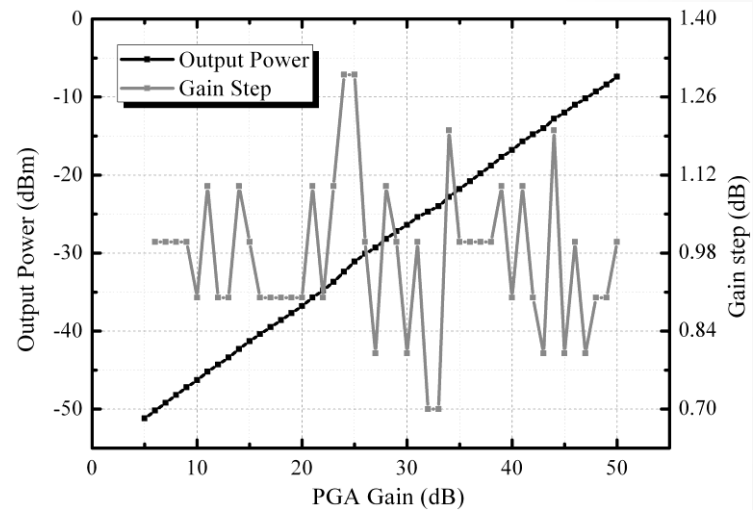
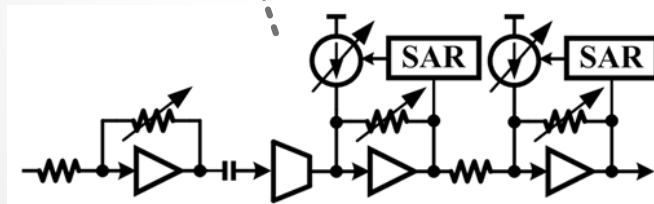
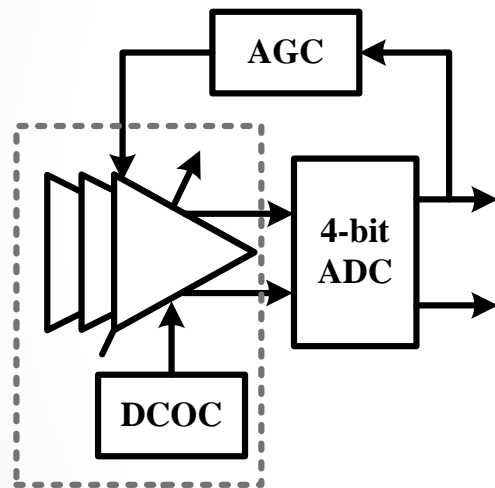
- Low-IF/zero-IF
- 5<sup>th</sup> order bandpass/3<sup>rd</sup> order lowpass filter
- Power-scalable



# PGA and AGC Loop

## • PGA&AGC

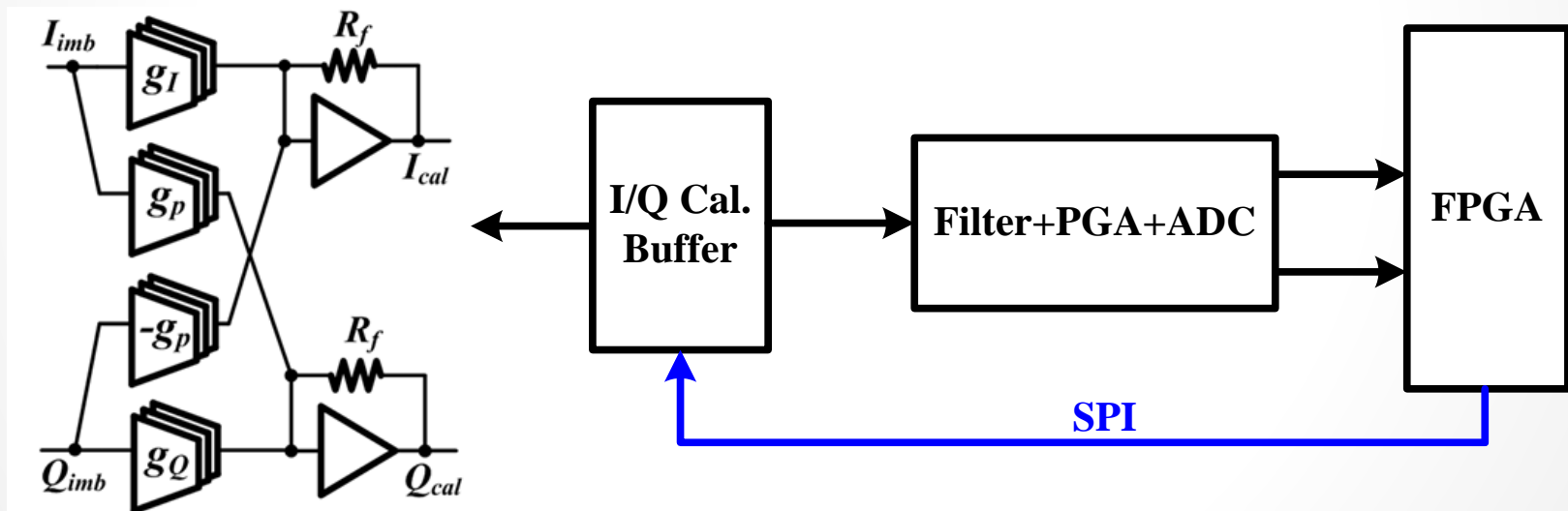
- 5-50dB/ 1dB step
- auto gain-control



# I/Q calibration

- I/Q calibration

- 5-50dB/ 1dB step
- auto gain-control



# I/Q calibration

## • I/Q calibration

- Improve IRR of Complex-BPF
- auto I/Q calibration

